

# Prototyping Printed Circuit Boards for the Omega Blade

Christian Coffield  
ECEN4013  
October 18, 2015



### Required components: Alpha/Gamma

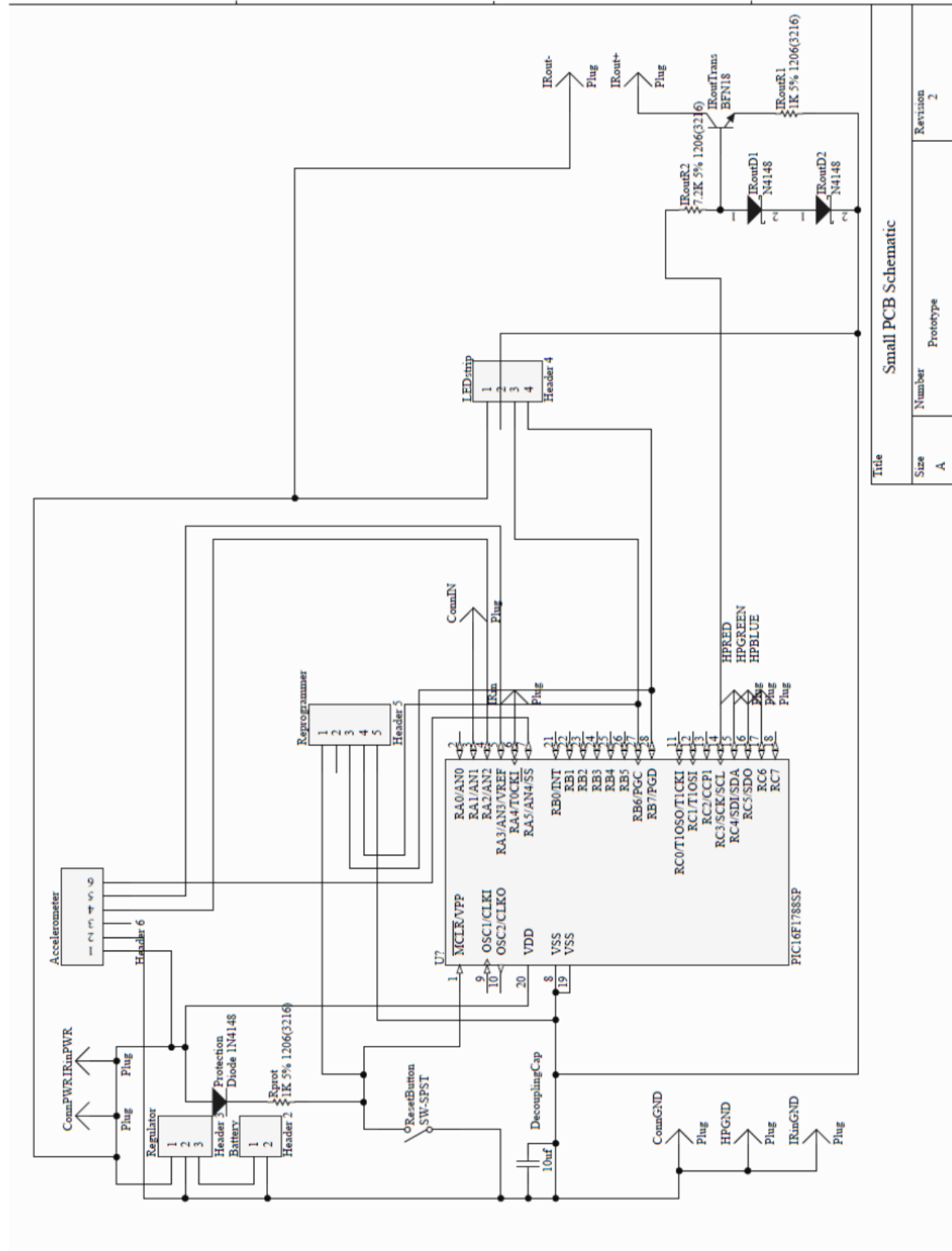
Component	Quantity	Footprint	Comments
PIC16F1788	1	SPDIP-28	
N4148 Diode	2	SOD323	
N4148 Diode	1	THRU-HOLE	
Programming Header	1	5-Header	
Accelerometer	1	6-Header	Must not be on center of rotation
LED Strip Header	1	4-Header	Should be near the top
Health RGB Header	1	4-Header	
BJT Transistor	1	SOT89	
Reset Button	1	2-Header	
Battery	1	2-Header	Must be near regulator
Regulator	1	3-Header	Must be near PIC
Decoupling Cap	1	805	Must be near PIC's Vdd/GND
Resistors	3	1206	
Interblade Conn.	1	3-Header	Should be near the top
IR LED Out	1	2-Header	Should be near the top
IR Reception	1	3-Header	Should be near the top

### Required Components: Beta/Delta

Component	Quantity	Footprint	Comments
PIC16F1788	1	SPDIP-28	
N4148 Diode	2	SOD323	
N4148 Diode	1	THRU-HOLE	
Programming Header	1	5-Header	
Accelerometer	1	6-Header	Must not be on center of rotation
LED Strip Header	1	4-Header	Should be near the top
Health RGB Header	1	4-Header	
BJT Transistor	1	SOT89	
Reset Button	1	2-Header	
Battery	1	2-Header	Must be near regulator
Regulator	1	3-Header	Must be near PIC

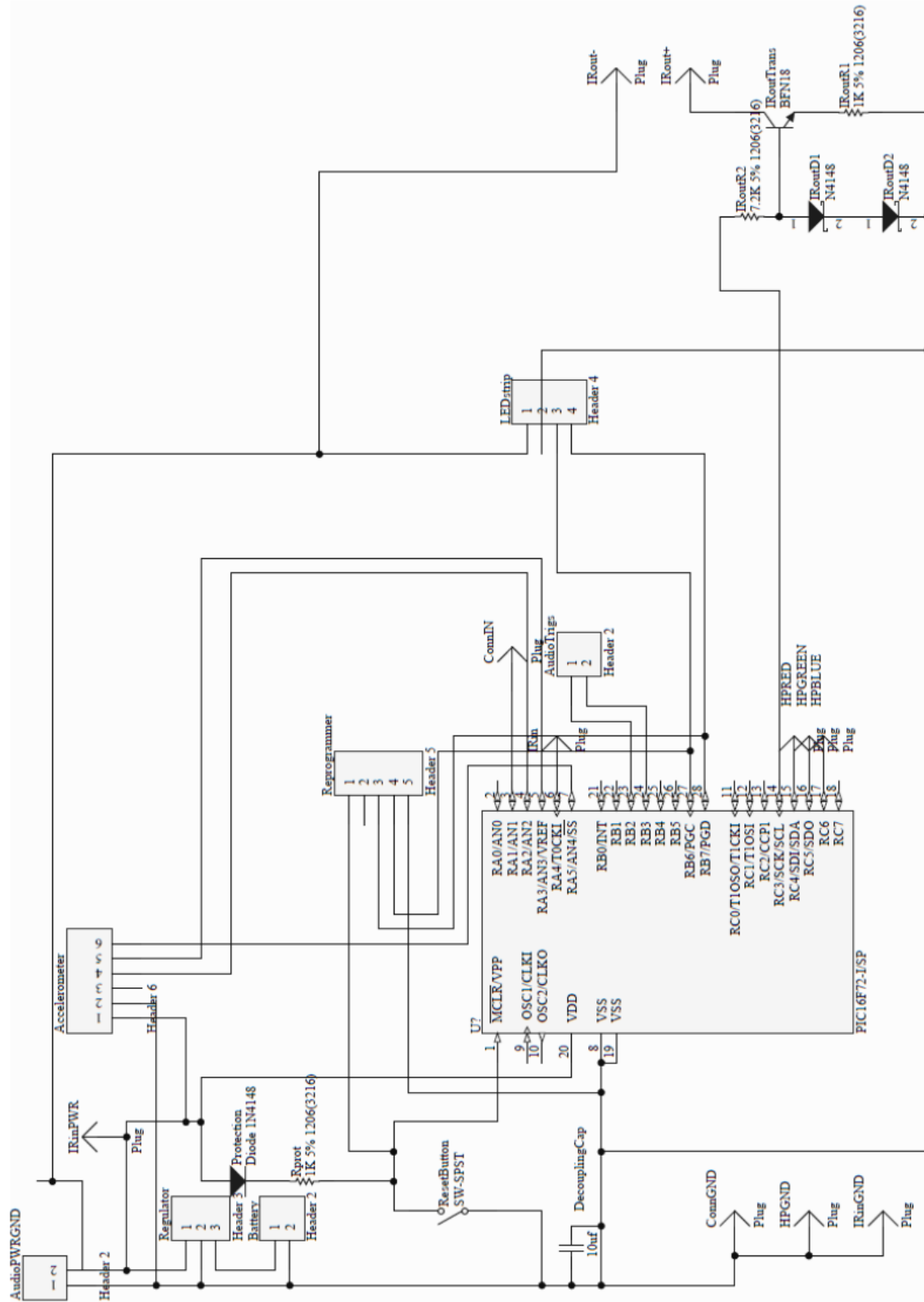


Decoupling Cap	1	805	Must be near PIC's Vdd/GND
Resistors	3	1206	
Interblade Conn.	1	2-Header	Should be near the top
IR LED Out	1	2-Header	Should be near the top
IR Reception	1	3-Header	Should be near the top
Audio Board	1	Custom	

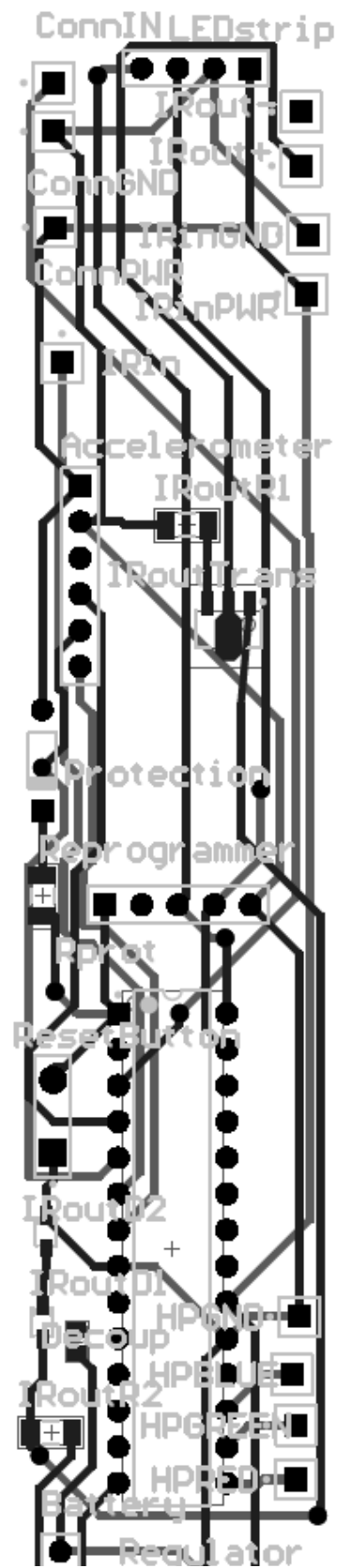


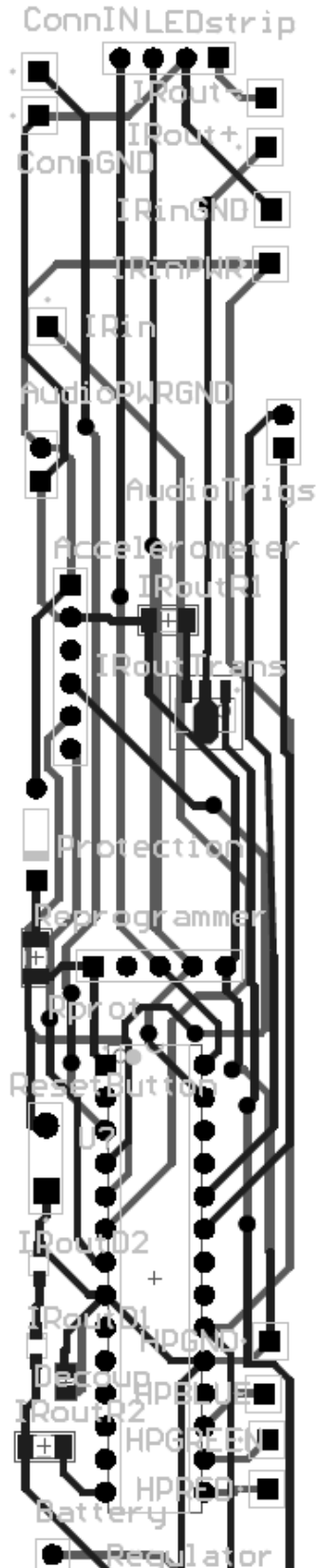
Small PCB Schematic

Size	Number	Revision
A	Prototype	2



Title			Large PCB Schematic	
Size	Number	Prototype	Revision	3
A				





Left: Alpha/Gamma PCB  
Design  
Right: Beta/Delta PCB Design